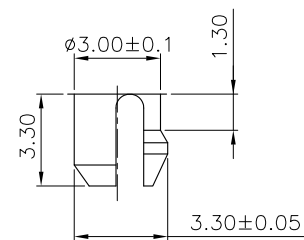
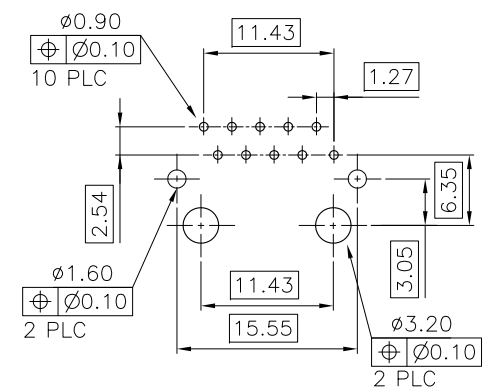
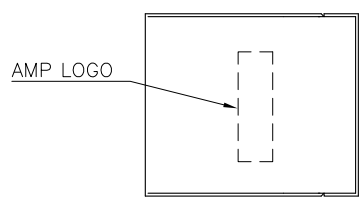


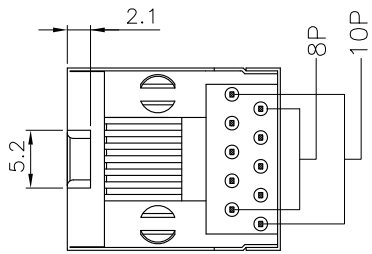
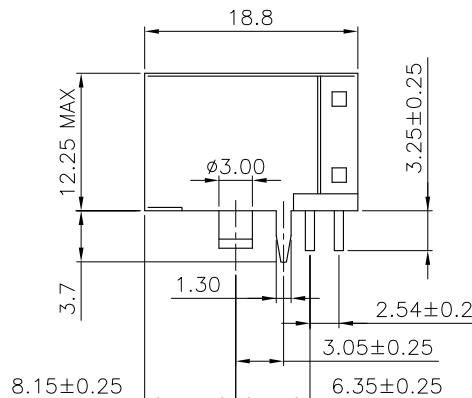
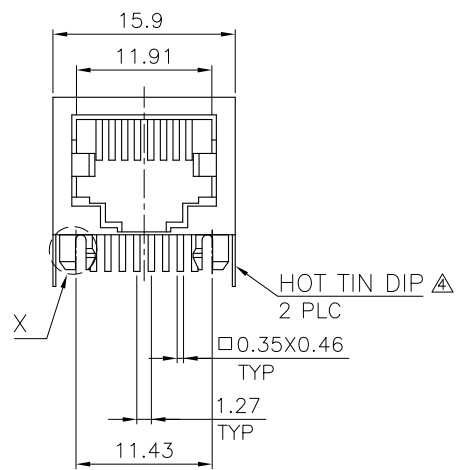
|     |      |           |     |               |         |     |      |
|-----|------|-----------|-----|---------------|---------|-----|------|
| LOC | DIST | REVISIONS |     |               |         |     |      |
| DW  | -    | P         | LTR | DESCRIPTION   | DATE    | DWN | APVD |
|     |      | B3        |     | ECR-12-012115 | 260TC12 | EL  | WK   |



DETAIL X



RECOMMENDED PCB LAYOUT (THICKNESS: 1.6mm)  
 DIMENSION TOLERANCE: 1 PLC: ±0.1 2PLC: ±0.05



|                     |        |            |                     |             |
|---------------------|--------|------------|---------------------|-------------|
| OBSOLETE            | 10P8C  | RED        | 50µ"                | 3-1734580-4 |
| OBSOLETE            |        |            | 30µ"                | 3-1734580-3 |
| OBSOLETE            |        |            | 15µ"                | 3-1734580-2 |
| OBSOLETE            |        |            | 6µ"                 | 3-1734580-1 |
| OBSOLETE            | 10P10C | BLACK      | 50µ"                | 1-1734580-4 |
|                     |        |            | 30µ"                | 1-1734580-3 |
|                     |        |            | 15µ"                | 1-1734580-2 |
|                     | 10P8C  | BLACK      | 6µ"                 | 1-1734580-1 |
|                     |        |            | 50µ"                | 1734580-8   |
|                     |        |            | 30µ"                | 1734580-7   |
|                     |        |            | 15µ"                | 1734580-6   |
|                     | 10P8C  | BLACK      | 6µ"                 | 1734580-5   |
|                     |        |            | 50µ"                | 1734580-4   |
|                     |        |            | 30µ"                | 1734580-3   |
| <del>OBSOLETE</del> | 10P8C  | BLACK      | 15µ"                | 1734580-2   |
|                     |        |            | 6µ"                 | 1734580-1   |
|                     | RJ 45  | HSG. COLOR | MIN. GOLD THICKNESS | PART NUMBER |

NOTE:

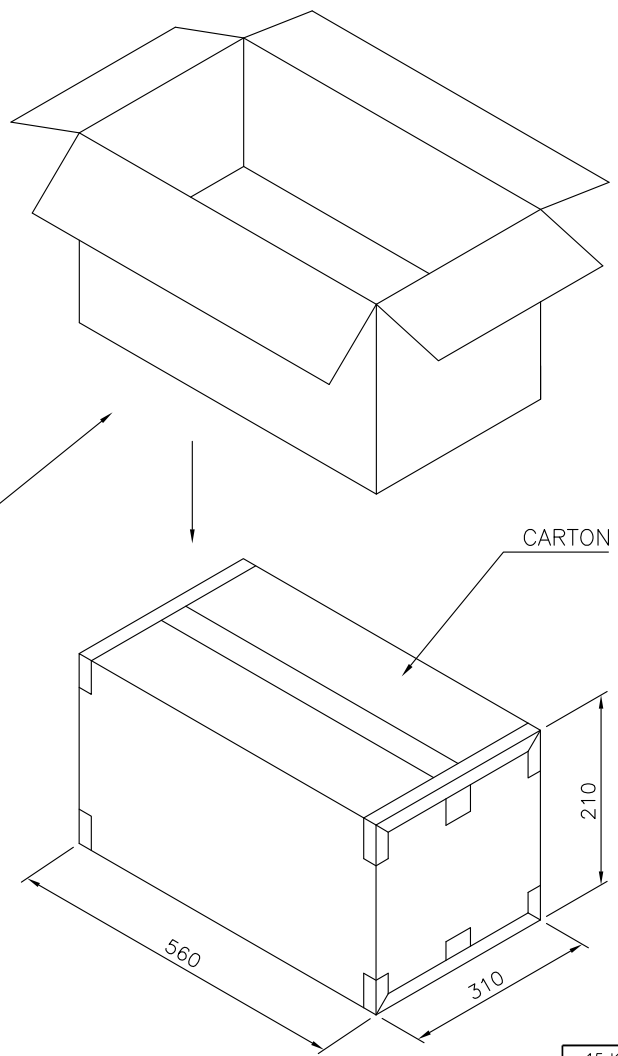
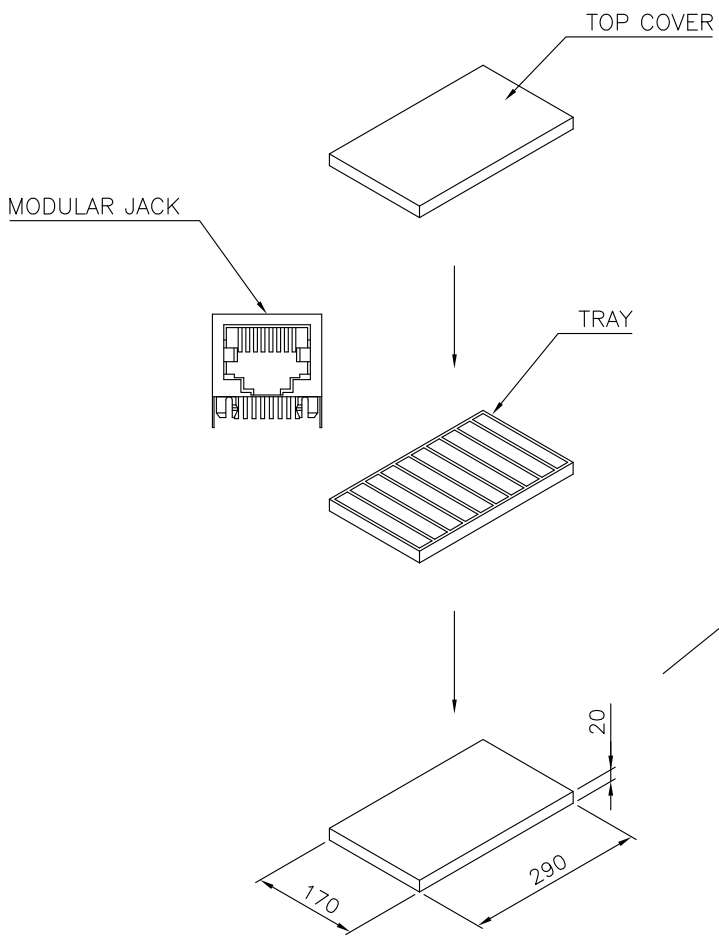
- MATERIAL:  
HOUSING: PA46 WITH 30% GF, UL 94V-0, BLACK COLOR.  
CONTACTS: PHOSPHOR BRONZE, 0.35X0.46 THICKNESS.  
SHIELD: BRASS, 0.25 THICKNESS.
- FINISH:  
CONTACTS: (SEE TABLE) GOLD PLATED ON CONTACT AREA,  
GOLD FLASH ON SOLDER TAILS, WITH ENTIRE  
CONTACT UNDERPLATED 1.27µm [50µ"] MIN. NICKEL.  
SHIELD: 0.508µm [20µ"] MIN. NICKEL PLATED.
- WAVE SOLDER CAPABLE TO 265°C PER 109-202, CONDITION B.

- △ PREPLATED HOT TIN DIP ON SHIELD'S LEGS.
- △ OBSOLETE PARTS: OBSOLETE CIS STREAMLINING PER D.RENAUD/D.SINISI


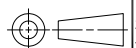
|   |  |                  |           |               |   |
|---|--|------------------|-----------|---------------|---|
| THIS DRAWING IS A CONTROLLED DOCUMENT.  |  | DWN              | O. HU     | 01JUN2007     | TE Connectivity<br>MODULAR JACK, RJ45, 8P8C, SHIELDED,<br>SIDE ENTRY, LOW PROFILE |
| DIMENSIONS: MM  |  | CHK              | S. HOU    | 01JUN2007     |   |
| TOLERANCES UNLESS OTHERWISE SPECIFIED:  |  | APVD             | W.J. KE   | 01JUN2007     |   |
| 0 PLC ± 0.50<br>1 PLC ± 0.30<br>2 PLC ± 0.20<br>3 PLC ± 0.10<br>4 PLC ± 0.10<br>ANGLES ± - ± 3° |  | PRODUCT SPEC     | 108-57535 |               |   |
| MATERIAL SEE NOTE   |  | FINISH           | SEE NOTE  |               | QUALIFICATION TEST REPORT   |
|   |  | 501-57628        |           | WEIGHT        | 5.25 GRAMS  |
|   |  | CUSTOMER DRAWING |           | SIZE          | A3  |
|   |  | SCALE -          |           | CAGE CODE     | 00779   |
|   |  | SHEET 1 OF 2     |           | DRAWING NO    | C=1734580   |
|   |  | REV B3           |           | RESTRICTED TO | -   |

THIS DRAWING IS UNPUBLISHED. RELEASED FOR PUBLICATION  
 © COPYRIGHT BY TYCO ELECTRONICS CORPORATION. ALL RIGHTS RESERVED.

| LOC |   | DIST |     | REVISIONS    |      |     |      |  |
|-----|---|------|-----|--------------|------|-----|------|--|
| DW  | - | P    | LTR | DESCRIPTION  | DATE | DWN | APVD |  |
|     |   |      |     | SEE SHEET 1. |      |     |      |  |



|              |            |          |               |          |
|--------------|------------|----------|---------------|----------|
| 15 Kg        | 13.5 Kg    | 100      | 25            | 2500 PCS |
| GROSS WEIGHT | NET WEIGHT | PCS/TRAY | TRAYS /CARTON | QUANTITY |

|   |  |                  |         |            |  |
|---|--|------------------|---------|------------|--|
| THIS DRAWING IS A CONTROLLED DOCUMENT.  |  | DWN              | O. HU   | 01JUN2007  |  <b>TE Connectivity</b> |
| DIMENSIONS: MM  |  | CHK              | S. HOU  | 01JUN2007  |  |
|  |  | APVD             | W.J. KE | 01JUN2007  |  |
| TOLERANCES UNLESS OTHERWISE SPECIFIED:  |  | PRODUCT SPEC     |         | NAME       |  |
| 0 PLC ± -   |  | APPLICATION SPEC |         | SIZE       | MODULAR JACK, RJ45, 8P8C, SHIELDED, SIDE ENTRY, LOW PROFILE  |
| 1 PLC ± -   |  | WEIGHT           |         | CAGE CODE  |  |
| 2 PLC ± -   |  | CUSTOMER DRAWING |         | DRAWING NO | RESTRICTED TO  |
| 3 PLC ± -   |  | SCALE            |         | A3         | 00779  |
| 4 PLC ± -   |  | SHEET            |         | ©=1734580  | 2 of 2   |
| 4 PLC ANGLES ± -  |  | REV              |         | B3         |  |
| MATERIAL  |  | FINISH           |         |            |  |